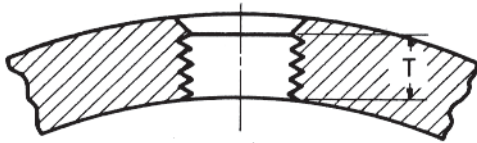
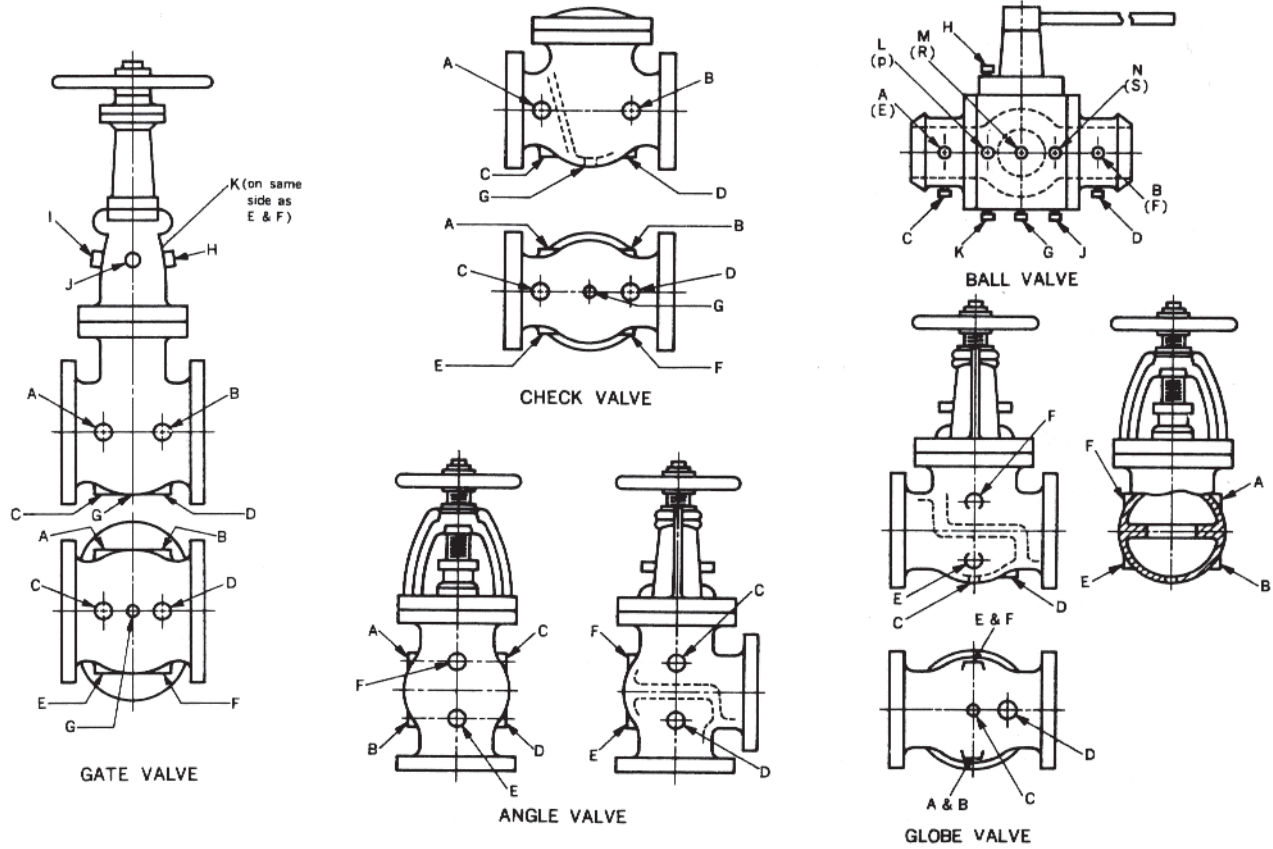


# TAPS AND DRAINS

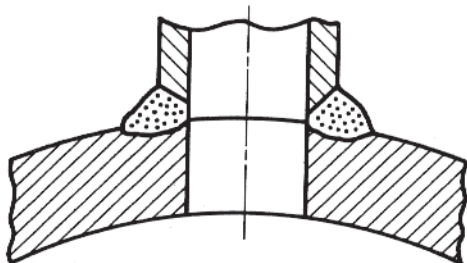
METHOD OF DESIGNATING LOCATION OF AUXILIARY CONNECTIONS WHEN SPECIFIED



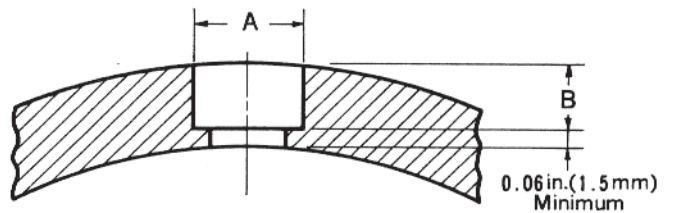
THREAD LENGTH FOR AUXILIARY CONNECTION

Conn. Size, NPS		3/8	1/2	3/4	1	1 1/4	1 1/2	2
		Length of Thread, T	in 0.41	0.53	0.55	0.68	0.71	0.72
	mm	11	14	14	18	18	19	20

In no case shall the effective length of thread, T, be less than that shown in table above. These lengths are equal to the effective thread length of American National Standard External Pipe Threads (ANSI B2.1).

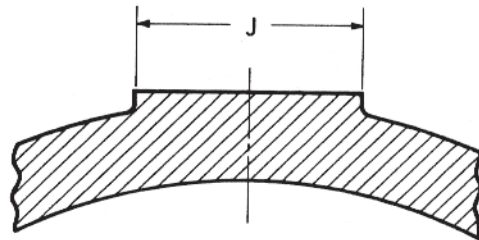


BUTT WELDING FOR AUXILIARY CONNECTIONS



SOCKET WELDING FOR AUXILIARY CONNECTIONS

Conn. Size, NPS		3/8	1/2	3/4	1	1 1/4	1 1/2	2
		Min. Dia of Socket, A	in 0.690	0.855	1.065	1.330	1.675	1.915
	mm	17.5	22	27	34	43	49	61
Min. Depth of Socket, B	in	0.19	0.19	0.25	0.25	0.25	0.25	0.31
	mm	5	5	6.5	6.5	6.5	6.5	8



BOSSSES FOR AUXILIARY CONNECTIONS

Conn. Size, NPS		3/8	1/2	3/4	1	1 1/4	1 1/2	2
		Dia. of Boss, J	in 1.25	1.50	1.75	2.12	2.50	2.75
	mm	32	38	44	54	64	70	86